

Directions to Illinois Vipassana Meditation Center  
10076 Fish Hatchery Rd  
Pecatonica, IL 61063  
(815) 489-0420

Coming from Chicago on I-90 West: *[Key Map]*

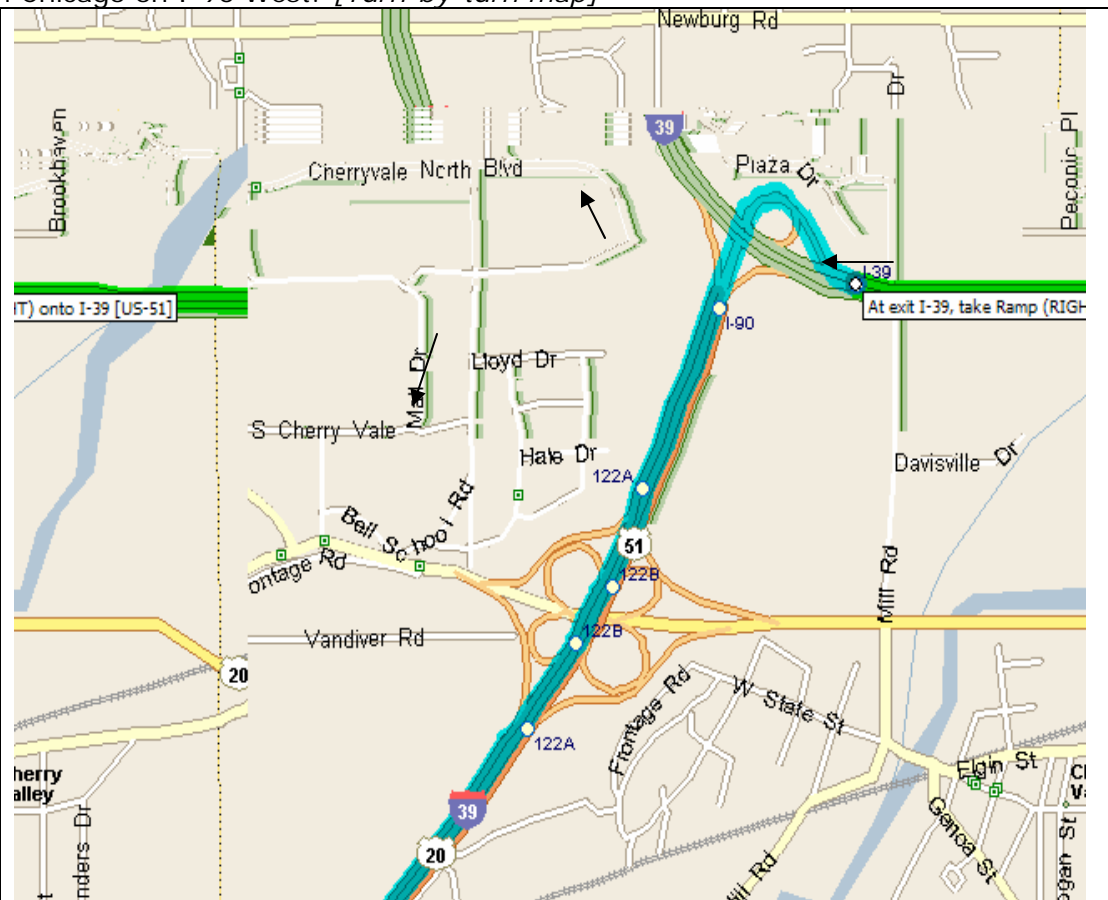


1. At I-39 exit, take ramp (right) on to I-30/ US-20/ US-51 and drive for 3.4 miles (5.5 kms)
2. Keep left and continue on US-20 for 14.4 miles (23.5 Kms) [Do not take ramp to I-39 south]
3. Turn right (north) on to N Winnebago Rd and follow the signs to "4 Lake Forest Preserve".

Directions to Illinois Vipassana Meditation Center  
 10076 Fish Hatchery Rd  
 Pecatonica, IL 61063  
 (815) 489-0420

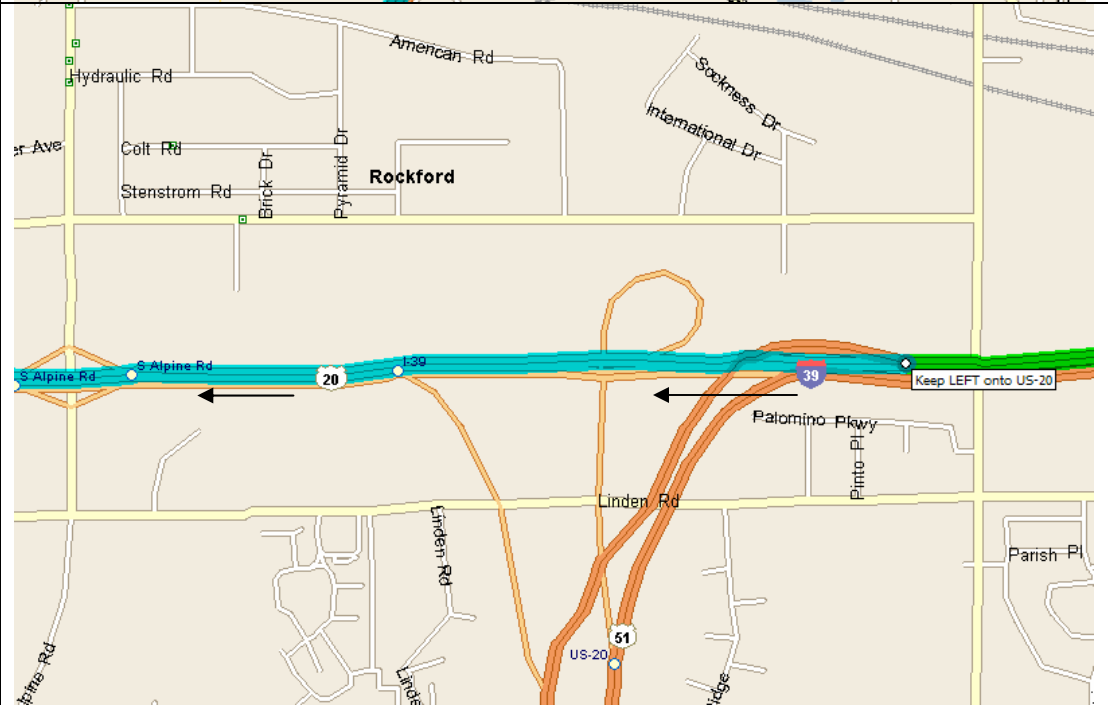
Coming from Chicago on I-90 West: *[Turn-by-turn map]*

At I-39 exit, take ramp (right) on to I-30/US-20/US-51 and drive for 3.4 miles (5.5 kms)



Keep left and continue on US-20 for 14.4 miles (23.5 Kms)

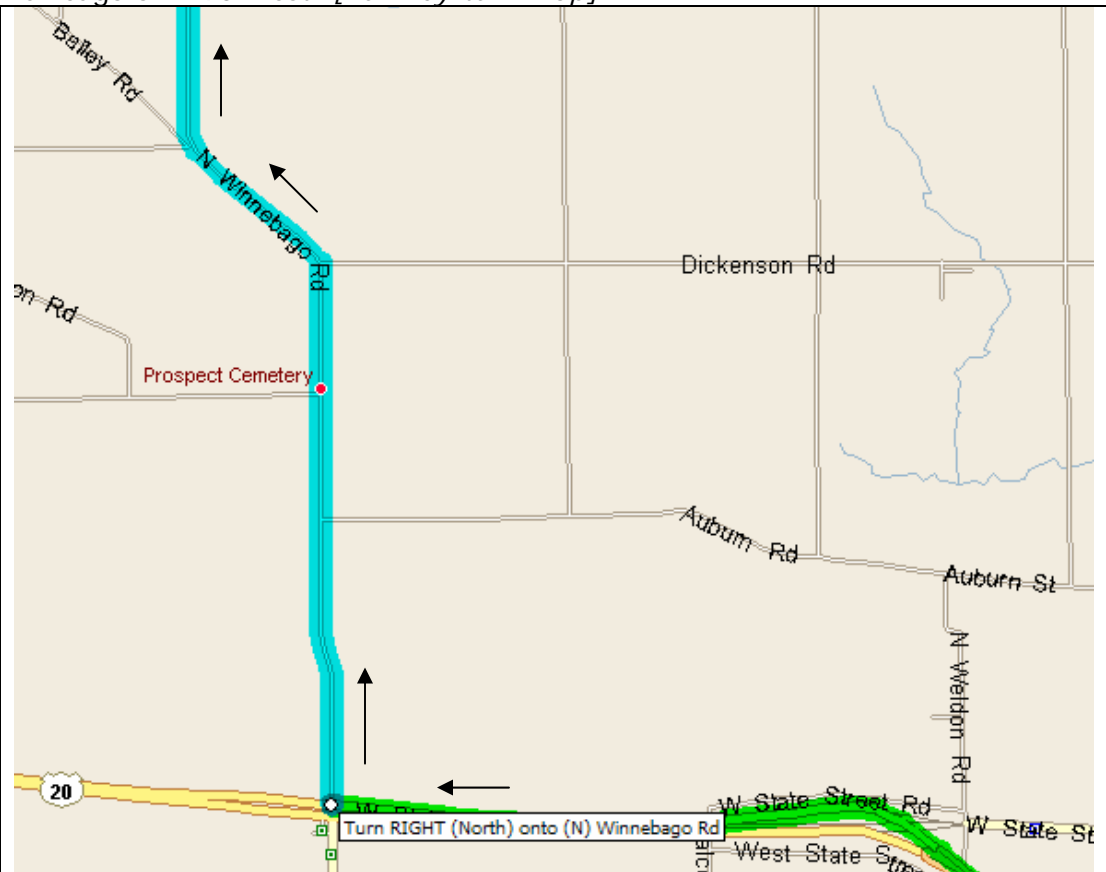
[Do not take ramp to I-39 south]



Directions to Illinois Vipassana Meditation Center  
10076 Fish Hatchery Rd  
Pecatonica, IL 61063  
(815) 489-0420

Coming from Chicago on I-90 West: [Turn-by-turn map]

Turn right  
(north) on  
to N  
Winnebago  
Rd and  
drive for  
4.9 miles  
(8 kms)



Turn right  
(east) on  
to Fish  
Hatchery  
Rd and  
drive for  
0.9 miles  
(1.5 Kms)  
to arrive  
at  
Dhamma  
Pakasa  
(Illinois  
Vipassana  
Meditation  
Center) on  
your right.

